



QUICK START UP CLACK N'TRACK FOR D3WL - D9WL - D3OWL

*Congratulations on your new Dosatron.
Please read the following important information.*

IMPORTANT NOTES

For complete information on the features and operations, refer to your Manual on www.dosatron.com or download our DOSATRON app



NEED HELP ?
Contact your DOSATRON distributor for service or parts

CAUTION

- When connecting a DOSATRON either to the public water supply or to its own water source, you must respect the regulations in force concerning protection of the source i.e. backflow prevention, etc.
- Contact local authorities for requirements of backflow prevention.

- When installing, operating, and maintaining the DOSATRON water powered metering pump, keep safety considerations foremost. Use proper tools, protective clothing, and eye protection when working on the equipment and install the equipment with a view toward ensuring safe operation.

- Follow the instructions in the manual and take additional safety measures appropriate to the liquid being pumped and the temperature of the water that powers the DOSATRON. Be extremely careful in the presence of hazardous substances (e.g. corrosives, toxins, solvents, acids, caustic, flammables, etc.).
- Before applying any aggressive chemicals, please consult your distributor to confirm compatibility with the dosing pump.

Hand tighten. No tools needed.

Technical specifications for setting up a data logger	
Pulse frequency	0 to 2 Hz
Minimum pulse duration	10 ms
1 pulse for a D3	0,45 liter
1 pulse for a D30	4,5 liters
1 pulse for a D9	1,5 liters

Technical characteristics of the wired sensor	
Rated voltage (max recommended / max absolute)	15 VDC / 50 VDC
Rated current (max recommended / max absolute)	50 µA / 0,7 A
Contact	Dry contact reed switch
Electrical connection	AWG 26/0,129 mm ²
Cable length	5 m
Sheath material	UL 20549 TPU

RECOMMENDATIONS

CUSTOMER SERVICE (WORLDWIDE - EUROPE)

Manufactured by:
DOSATRON INTERNATIONAL S.A.S.

Rue Pascal - B.P. 6 - 33370 TRESSES (BORDEAUX) - FRANCE
Tel. 33 (0)5 57 97 11 11
Fax. 33 (0)5 57 97 11 29 / 33 (0)5 57 97 10 85
info@dosatron.com - www.dosatron.com



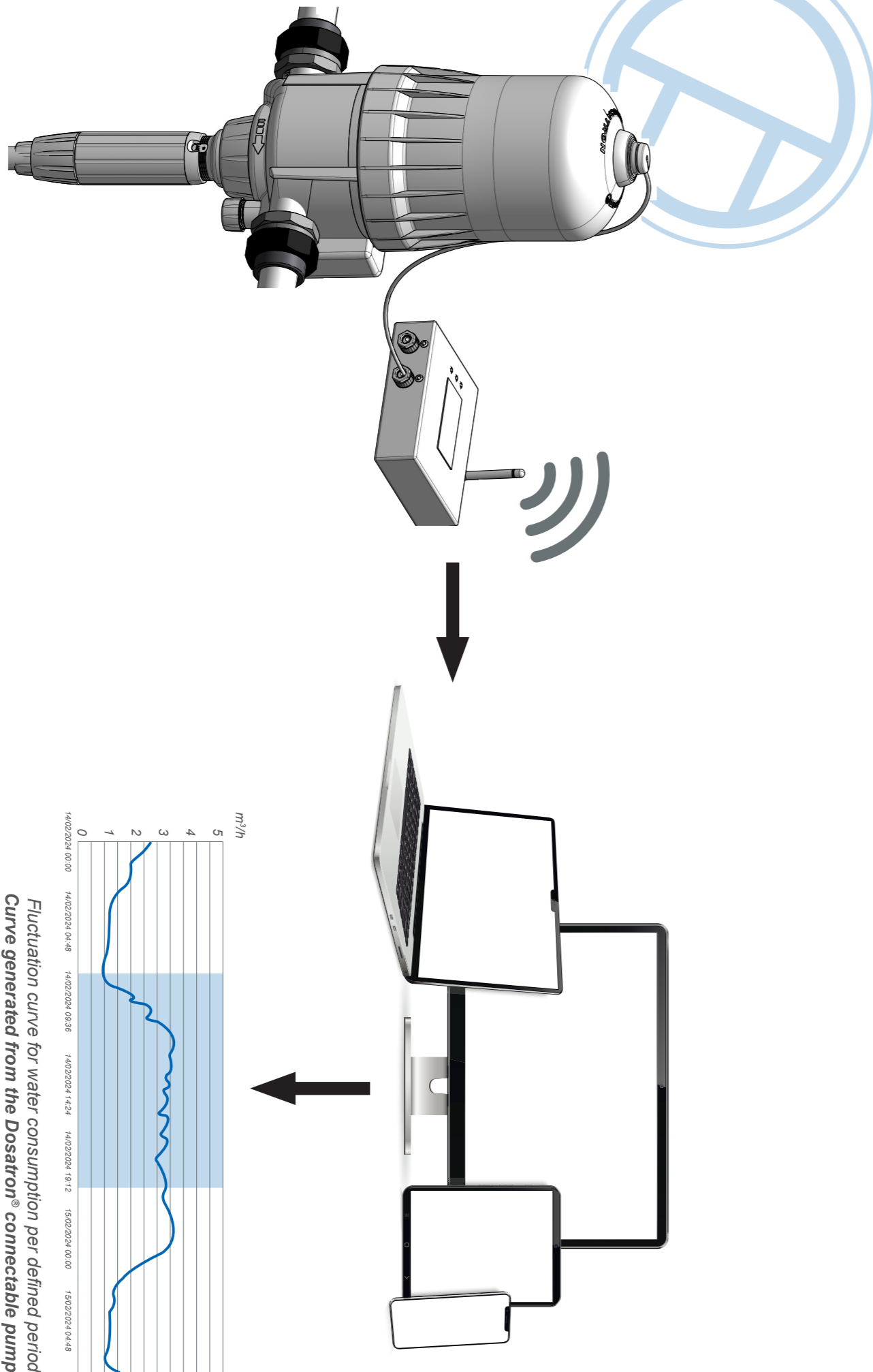
CUSTOMER SERVICE (AMERICAS)

DOSATRON INTERNATIONAL INC.
2090 SUNNYDALE BLVD. CLEARWATER - FL 33765 - USA
Tel. 1-727-443-5404 / 1-800-523-8499 - Fax 1-727-447-0591
Site web: www.dosatronusa.com

This document does not form a contractual engagement on the part of Dosatron International and is for information only. Dosatron International reserves the right to alter product specification or appearance without prior notice.

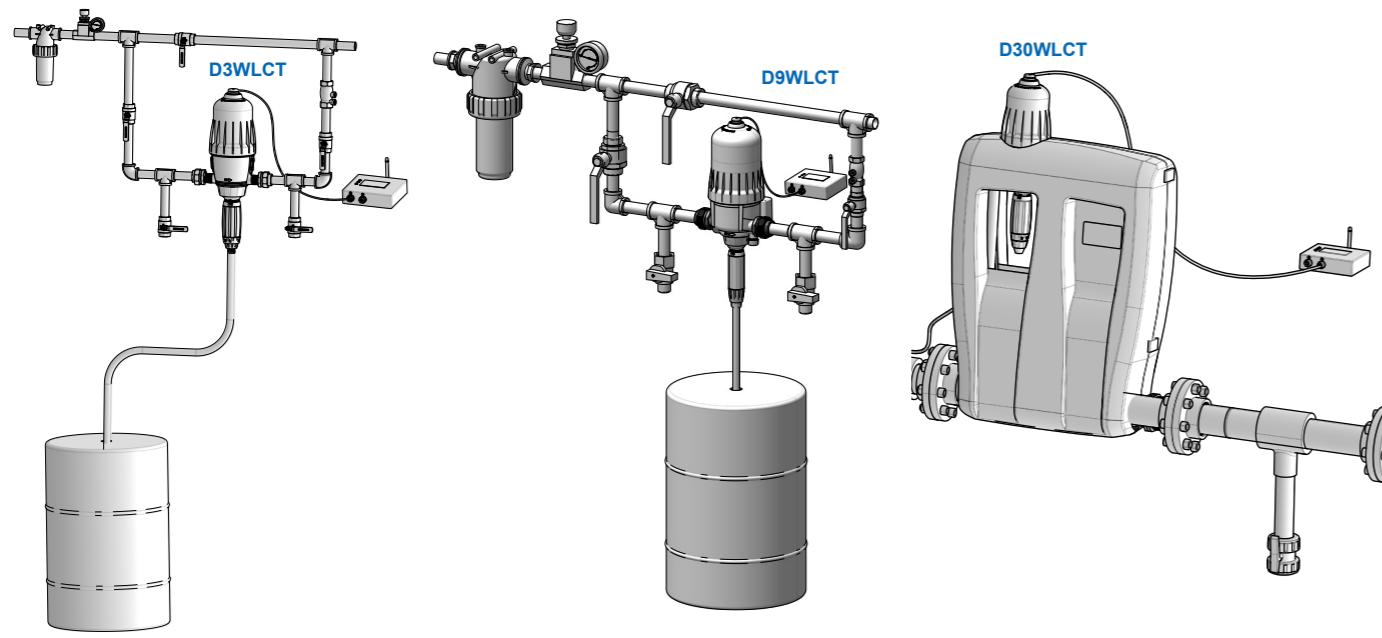
© DOSATRON INTERNATIONAL S.A.S 2024

OSUCTSAV-EN-11-24

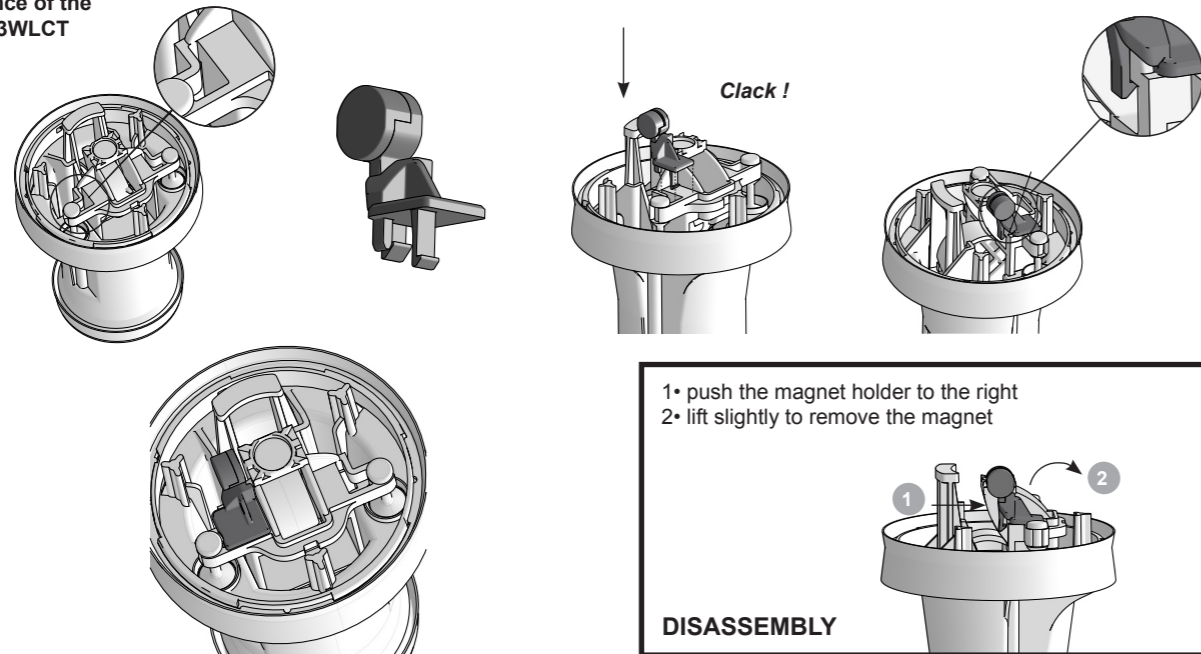


*Fluctuation curve for water consumption per defined period
Curve generated from the Dosatron® connectable pump*

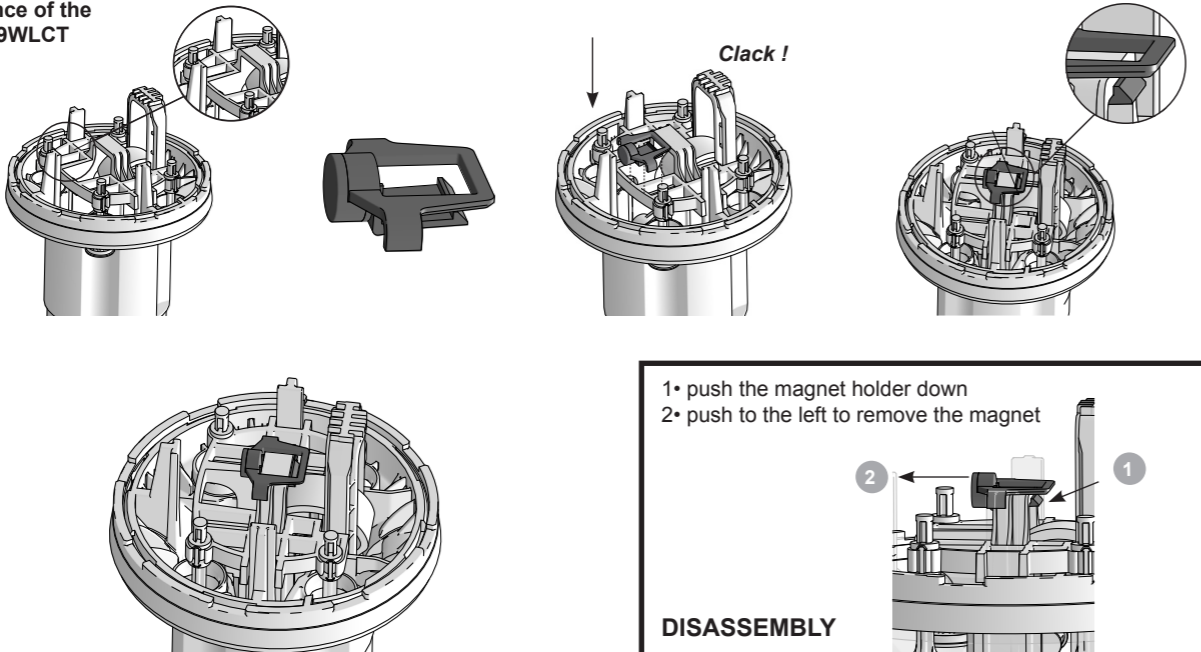
Please read the following important information.



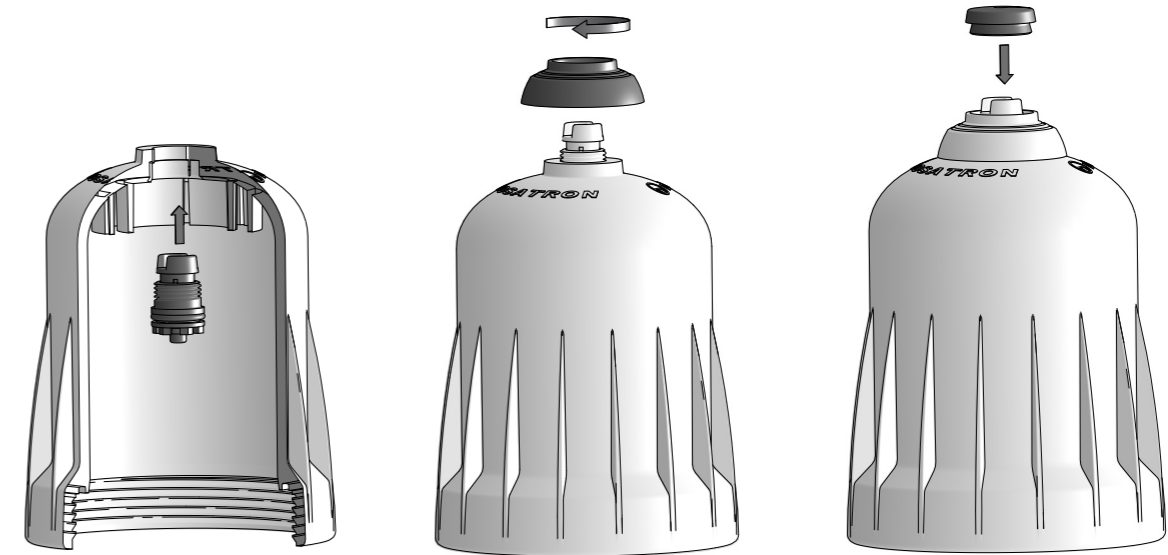
1 Maintenance of the magnet D3WLCT



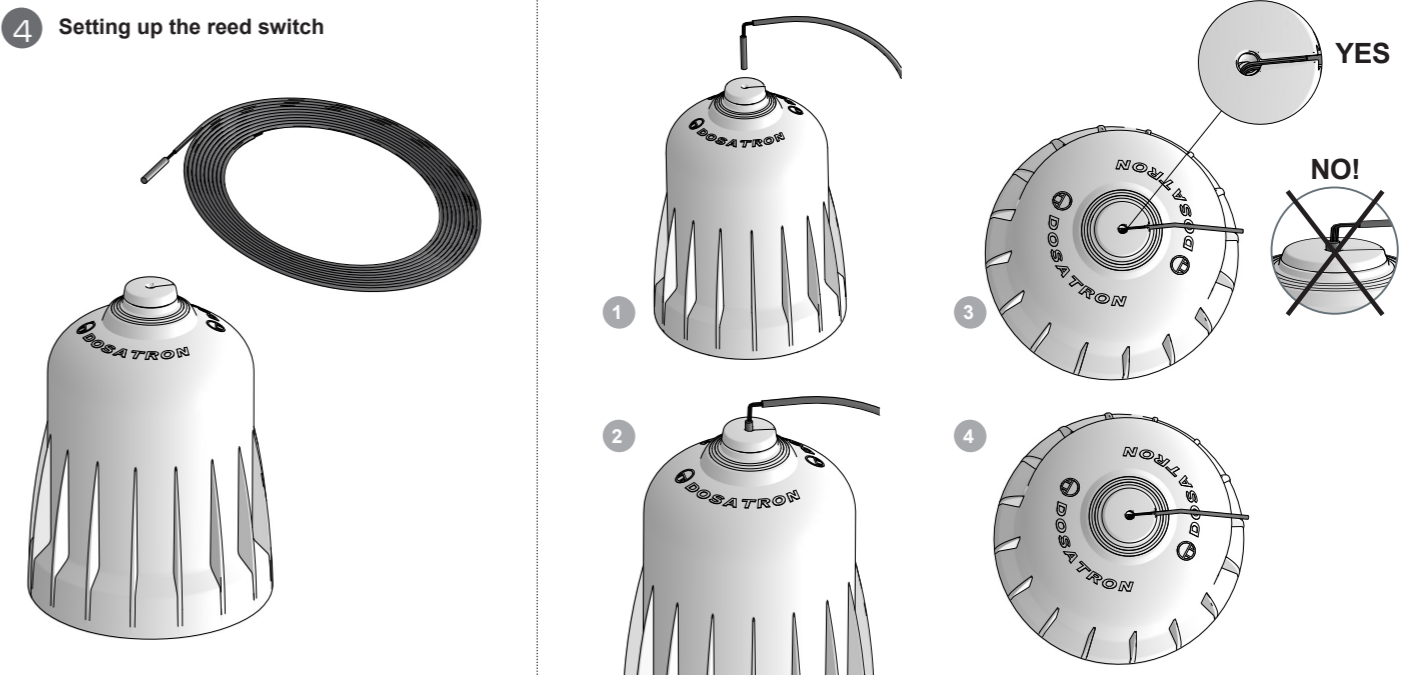
2 Maintenance of the magnet D9WLCT



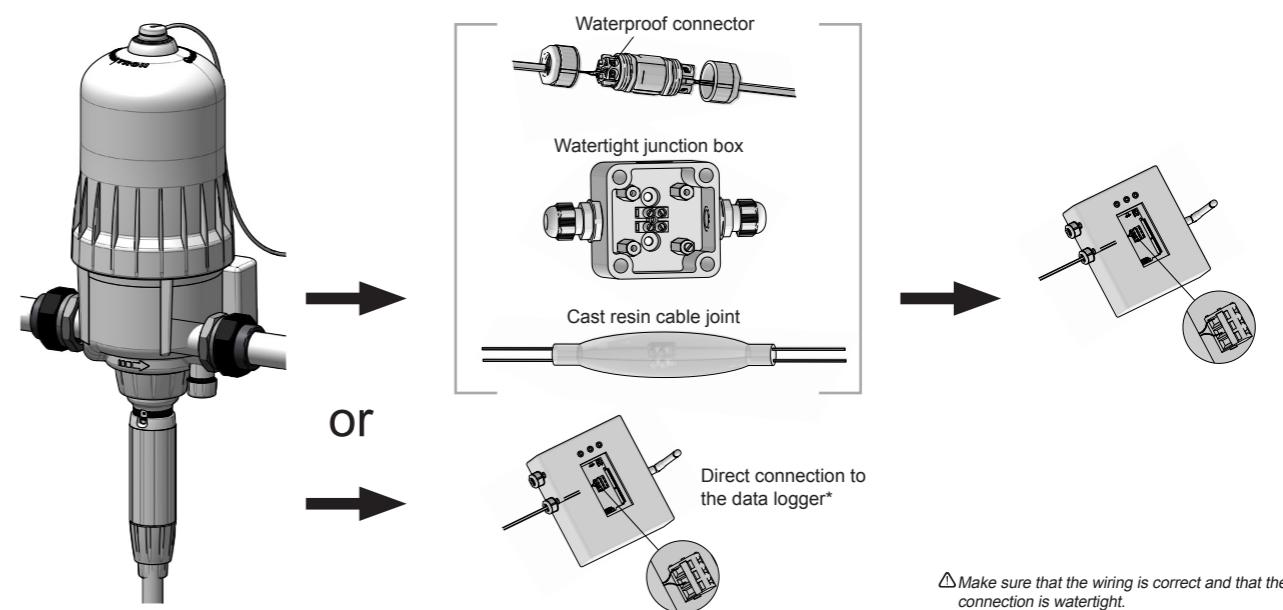
3 Installing the air bleed



4 Setting up the reed switch



5 Different types of connection between the digital input of the data logger and the Clack n'Track wire



*Not supplied